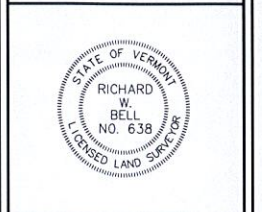


PROJECT #15931
PROJECT MANAGER: RWB
DESIGN: RWB
DRAFTER: RWB/TWW
CHECKED BY: RWB
DATE: DECEMBER, 2015
SCALE: 1"=20'

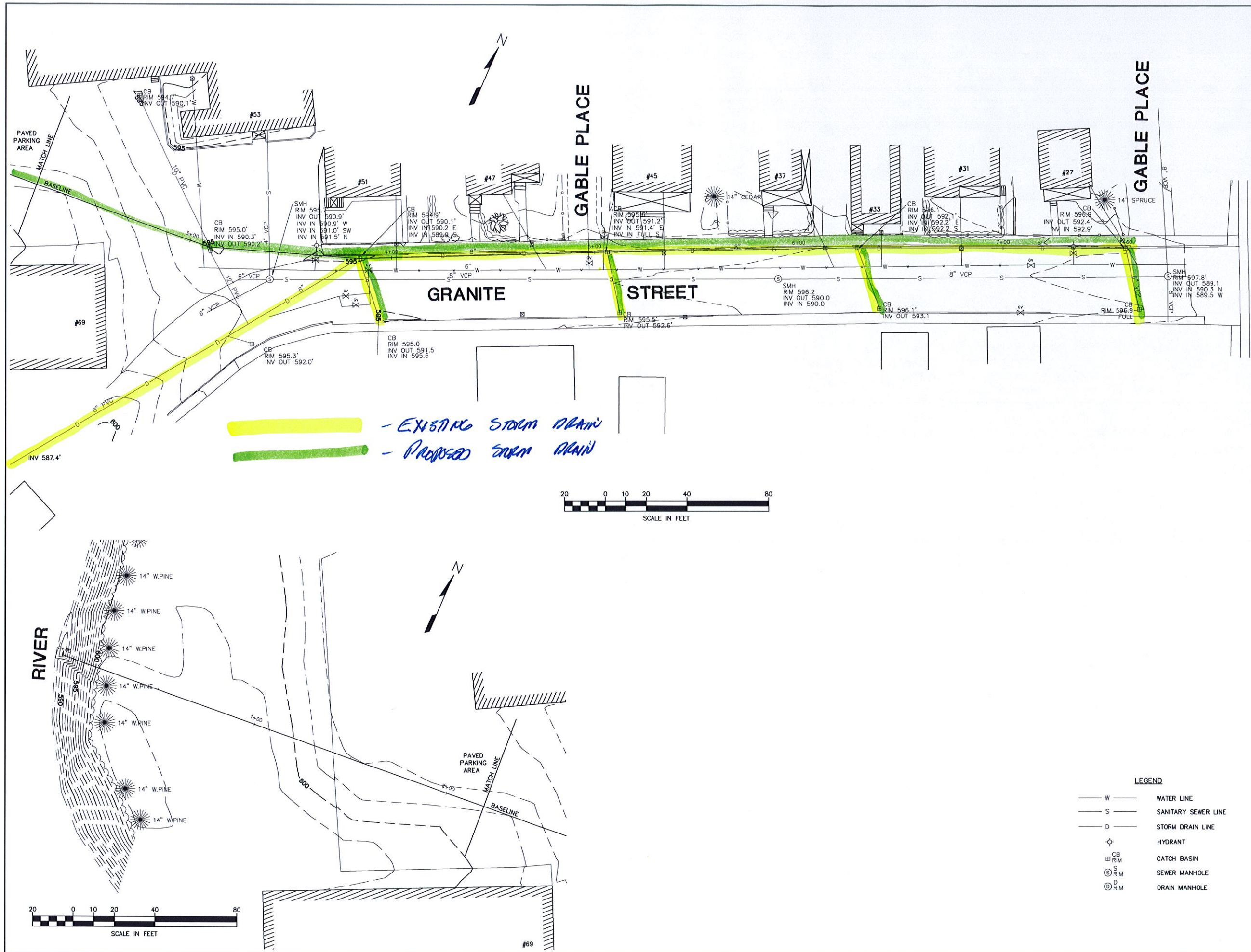
REVISIONS

GRANITE STREET  
 EXISTING CONDITIONS PLAN  
 BARRE, VERMONT

**C1**

DWG. # S-931B  
 SHEET 1 OF 2



**RICHARD W. BELL**  
**LAND SURVEYING, INC.**  
 297 SOUTH MAIN ST.  
 BARRE, VERMONT 05641  
 802-478-8282 C 802-783-5037  
 EMAIL: RBELL@RWBELL-LANDSURVEYING.COM

PROJECT #15931  
 PROJECT MANAGER: RWB  
 DESIGN: RWB  
 DRAFTER: RWB  
 CHECKED BY: RWB  
 DATE: DECEMBER, 2015  
 SCALE: 1"=20'

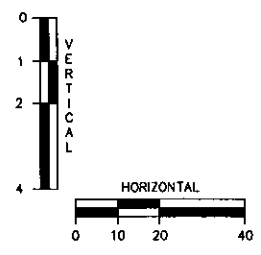
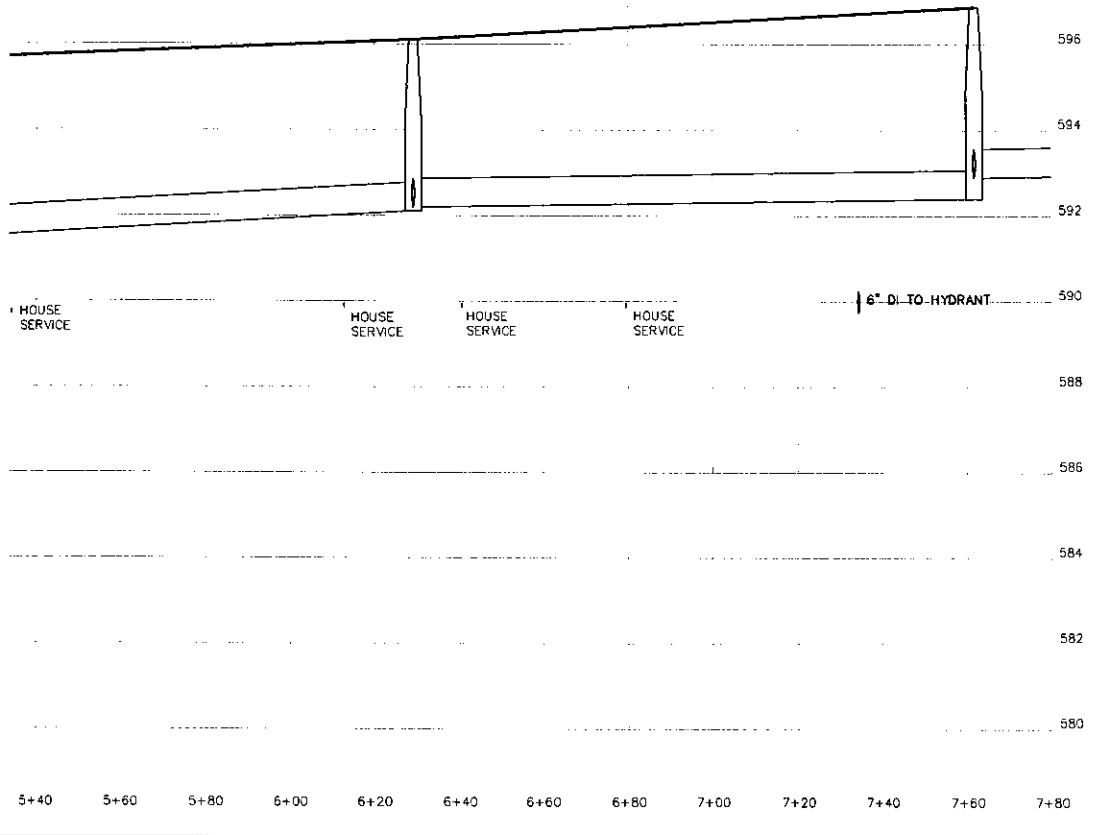
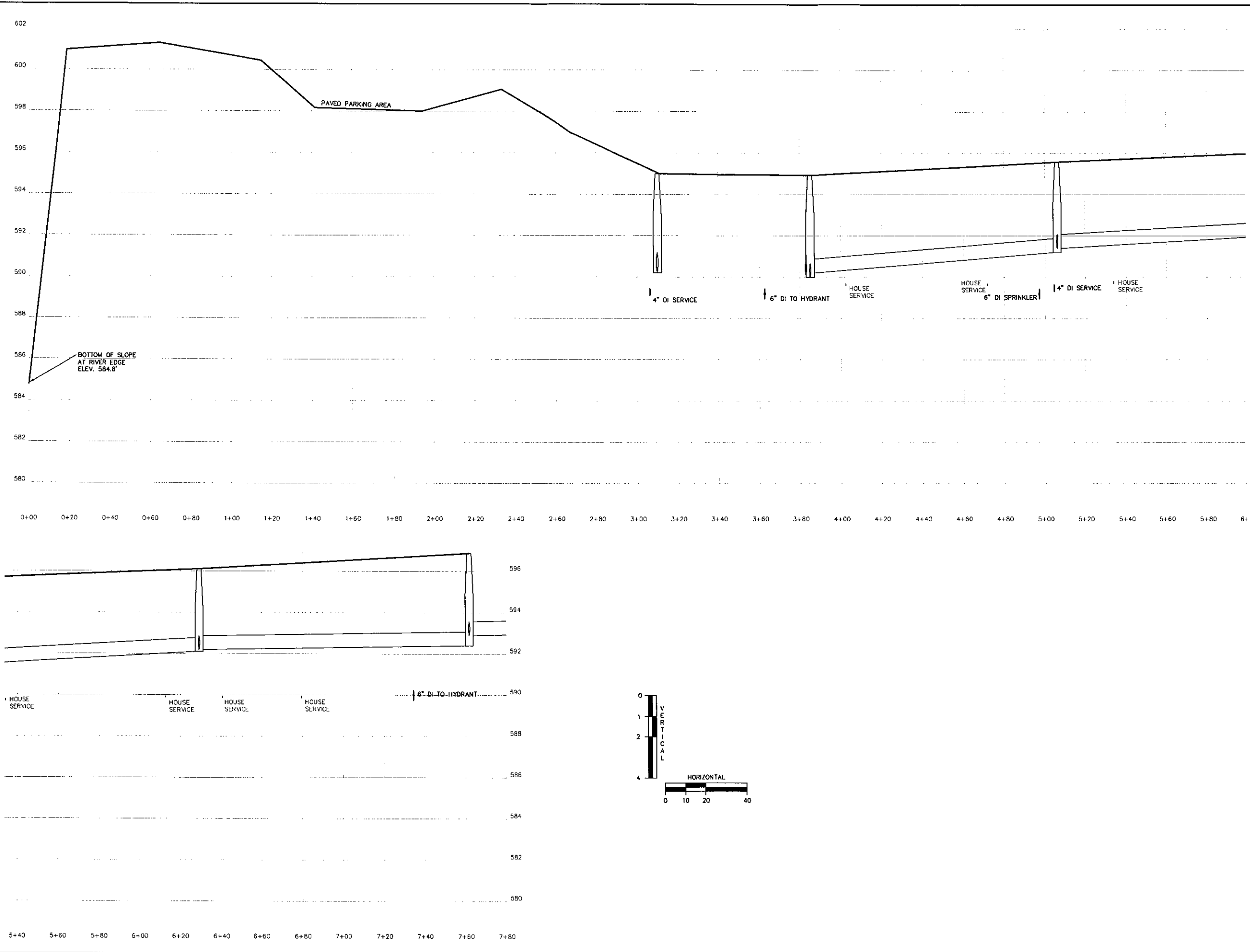
REVISIONS



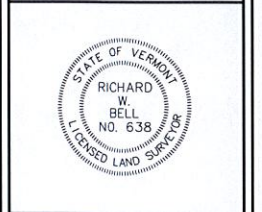
GRANITE STREET  
 EXISTING CONDITIONS PLAN  
 BARRE, VERMONT

**C2**

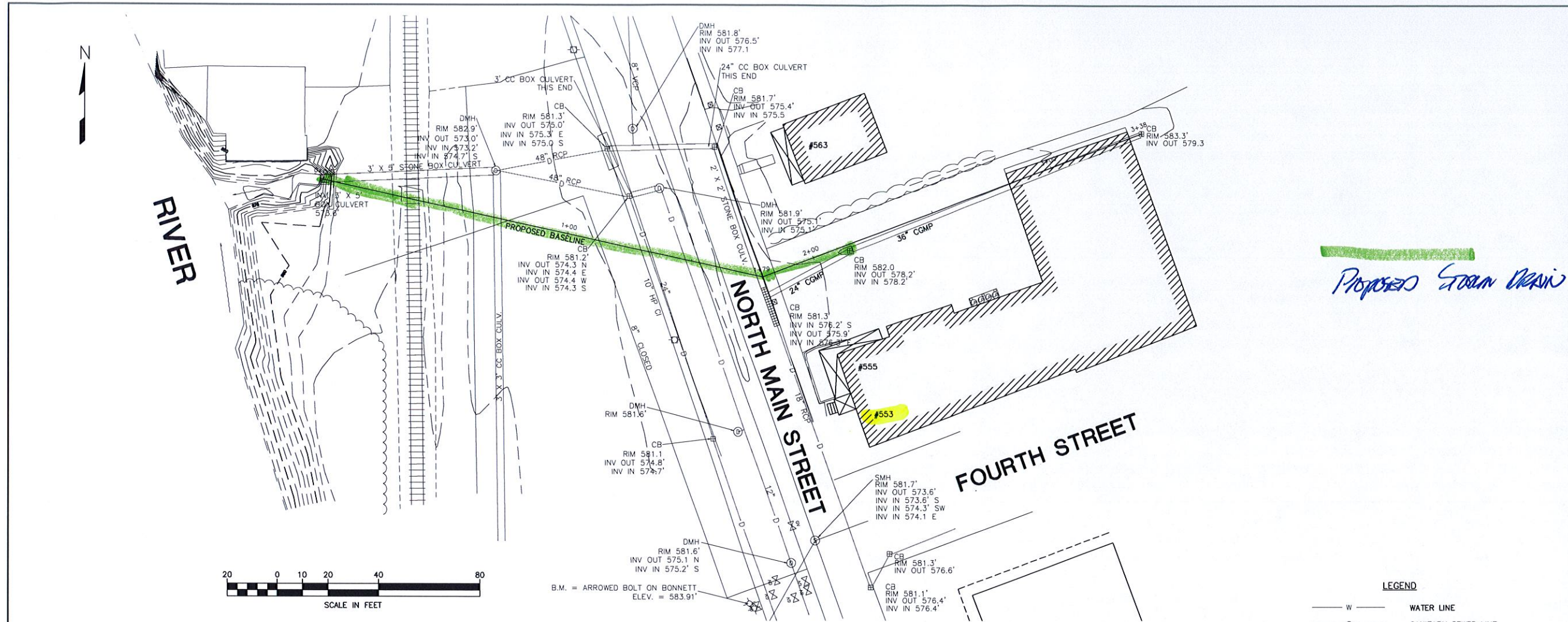
DWG. # S-931B  
 SHEET 2 OF 2



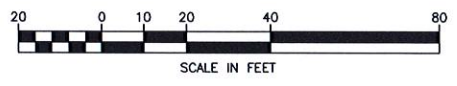
REVISIONS

**NORTH MAIN STREET**  
 EXISTING CONDITIONS PLAN  
**BARRE, VERMONT**



*Proposed Storm Drain*



- LEGEND**
- W — WATER LINE
  - S — SANITARY SEWER LINE
  - D — STORM DRAIN LINE
  - ⊕ HYDRANT
  - ⊕ CB RIM CATCH BASIN
  - ⊕ S RIM SEWER MANHOLE
  - ⊕ D RIM DRAIN MANHOLE

