

Fire Prevention Officer
(802) 476-0254

Remember to check your smoke detector ever month,
AND
Change your battery every time you change your clock.

HOME FIRE SAFETY CHECKLIST

PRE-FIRE PLANNING

Have you planned at least two ways to get out of every room in your home?

YES NO

Do you keep exit routes clear in your home?

YES NO

Do you know how to notify your fire department quickly and correctly in case of fire?

YES NO

ESPECIALLY FOR CHILDREN

Do you make it a rule never to leave small children alone or unattended?

YES NO

Do your baby-sitters (and you) know the first rule of safety in fire emergencies?

YES NO

Do you show your baby-sitters the escape routes from your home, and give instructions on the correct way to report a fire?

YES NO

GOOD SMOKING HABITS

Is smoking in bed strictly against the rule in your home?

YES NO

Do you always make sure that cigarette, cigar and pipe ashes are completely extinguished before you dispose of them? Before going to bed, be SURE there are no cigarettes still burning.

YES NO

Are matches kept out of the reach of children?

YES NO

HEATING AND COOKING

YES NO

Are furnaces, stoves and smoke pipes kept in good repair and located far enough away from combustible walls and ceilings so that they do not create a hazard?

YES NO

If you have portable space heaters in your home do you see that they are properly maintained and located?

YES NO

Are portable space heaters away from people, curtains, and furniture?

YES NO

Do you have an annual inspection of your heating system? Have heating equipment checked and cleaned each year.

YES NO

Do your sleeves get into things when you cook? Wear tight-fitting clothing when you cook.

YES NO

Can you stop a cooking fire safely?

YES NO

Smother a pan fire with a lid. Never use water. If cooking oil starts to smoke, turn down the heat. Don't throw whatever's handy on the counter, such as dumping flour from the bag, on the fire (explosion!)

ELECTRICITY

Do you see that extension cords are never run under rugs or hooked over nails?

YES NO

When the breaker "trips" or a fuse blows, do you investigate WHY it happened? Is the right size fuse (20 amps for lighting circuits) in each socket in the fuse box?

YES NO

Is your TV well ventilated? Allow air space around the TV to prevent overheating.

YES NO

GOOD HOUSEKEEPING

Do you keep rubbish cleaned out of the attic, basement, closets, garage and yard?

YES NO

Are gasoline and other flammable liquids stored in safety cans, and kept well away from both heat and children?

YES NO

Stay low in a fire.



In the event of a fire, stay low and crawl out the nearest exit. Once out account for everyone that was home. Meet the fire department and tell them if you are missing someone.

How To Use a Portable Fire Extinguisher

Remember the acronym, "P.A.S.S."

P ... PULL the Pin

A ... AIM the extinguisher nozzle at the base of the flame

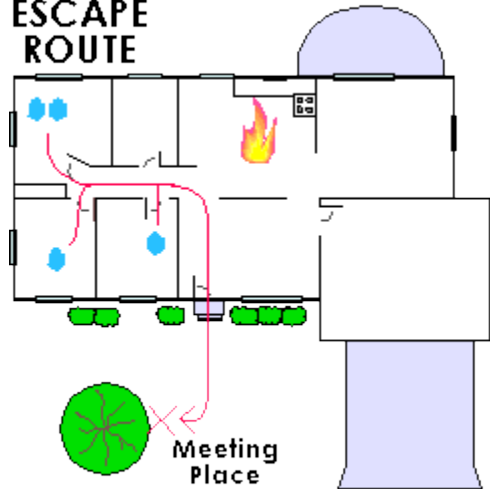
S ... SQUEEZE the trigger while holding the extinguisher up right

S ... SWEEP the extinguisher from side to side, covering the area of fire with the extinguisher agent



Plan Your Escape

ESCAPE ROUTE



Escape Plan

Plan Upstairs Exit

Please sit down with your family and create an Emergency Escape Plan. Then Practice it ever month so that your children know what to do in an emergency.

