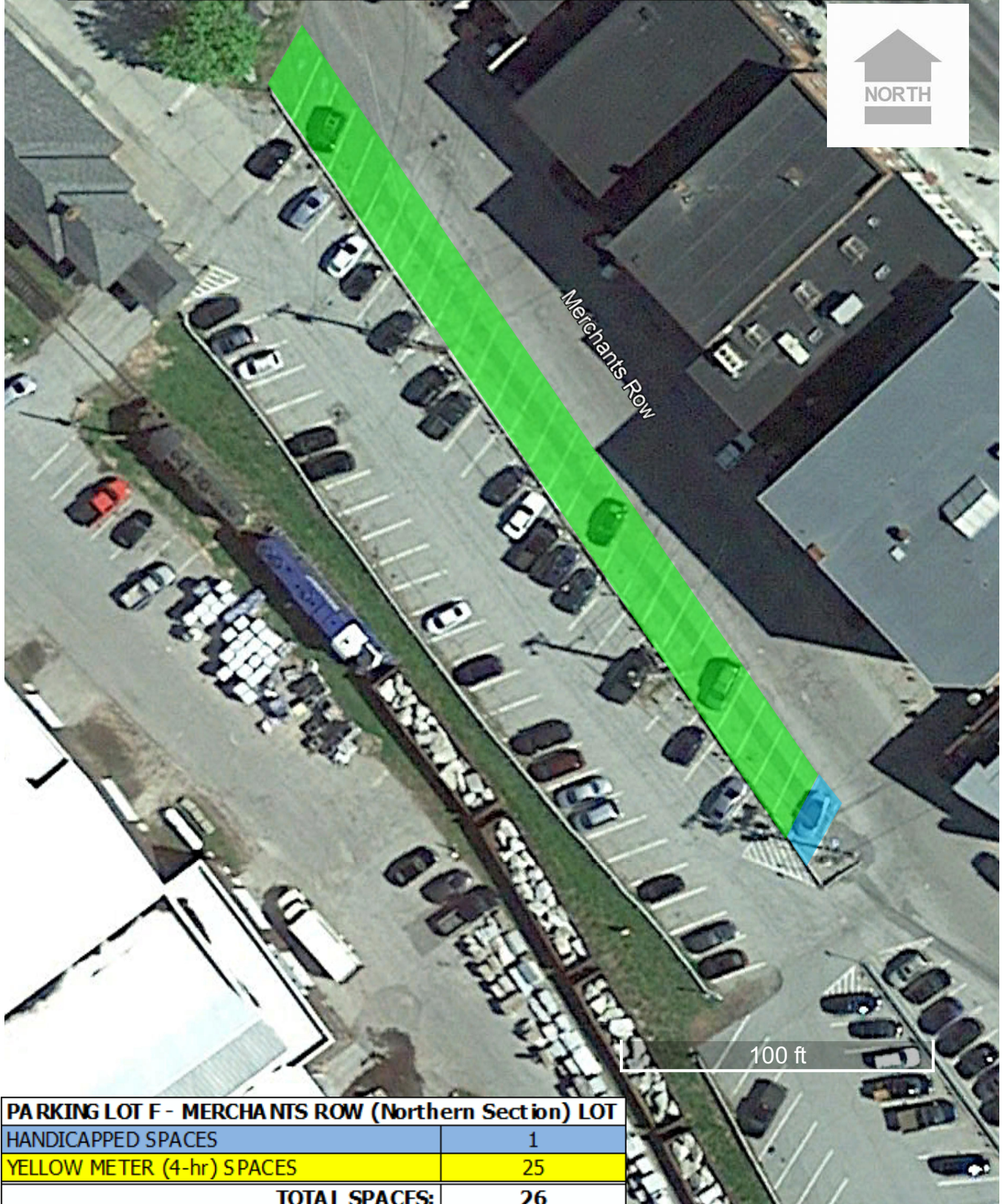


MERCHANTS ROW (Northern Section) PARKING LOT



| PARKING LOT F - MERCHANTS ROW (Northern Section) LOT | |
|--|-----------|
| HANDICAPPED SPACES | 1 |
| YELLOW METER (4-hr) SPACES | 25 |
| TOTAL SPACES: | 26 |

Aerial photo from Google Earth May 2015 imagery