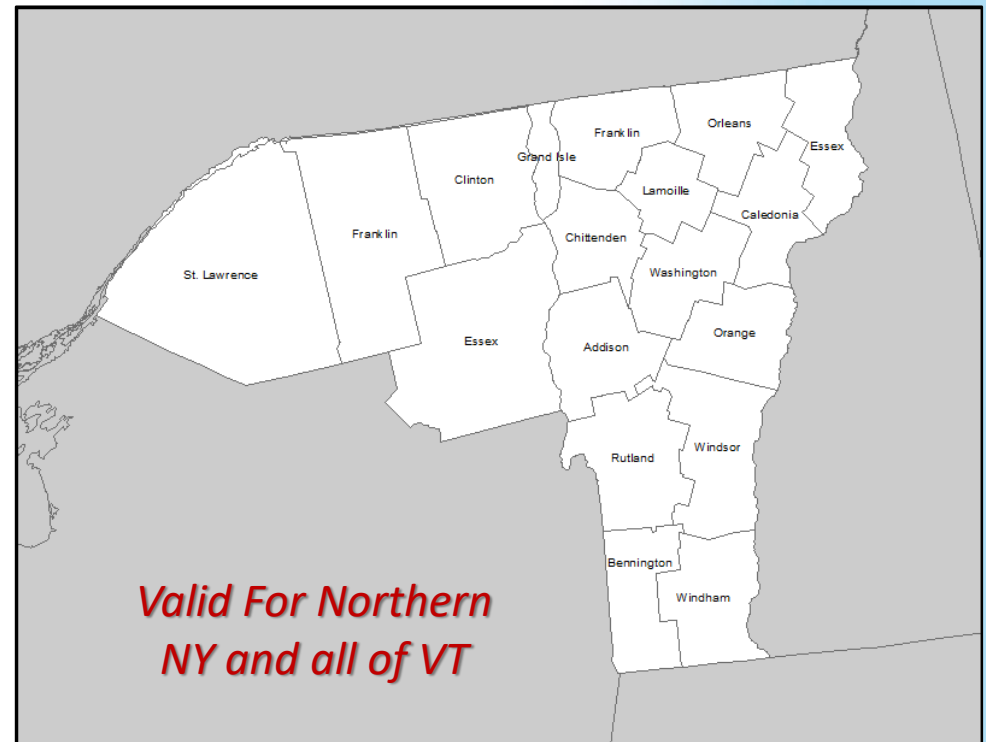


Winter Storm to Impact Area

Decision Support Briefing #5
4 PM February 1, 2021

Key messages and what has changed:

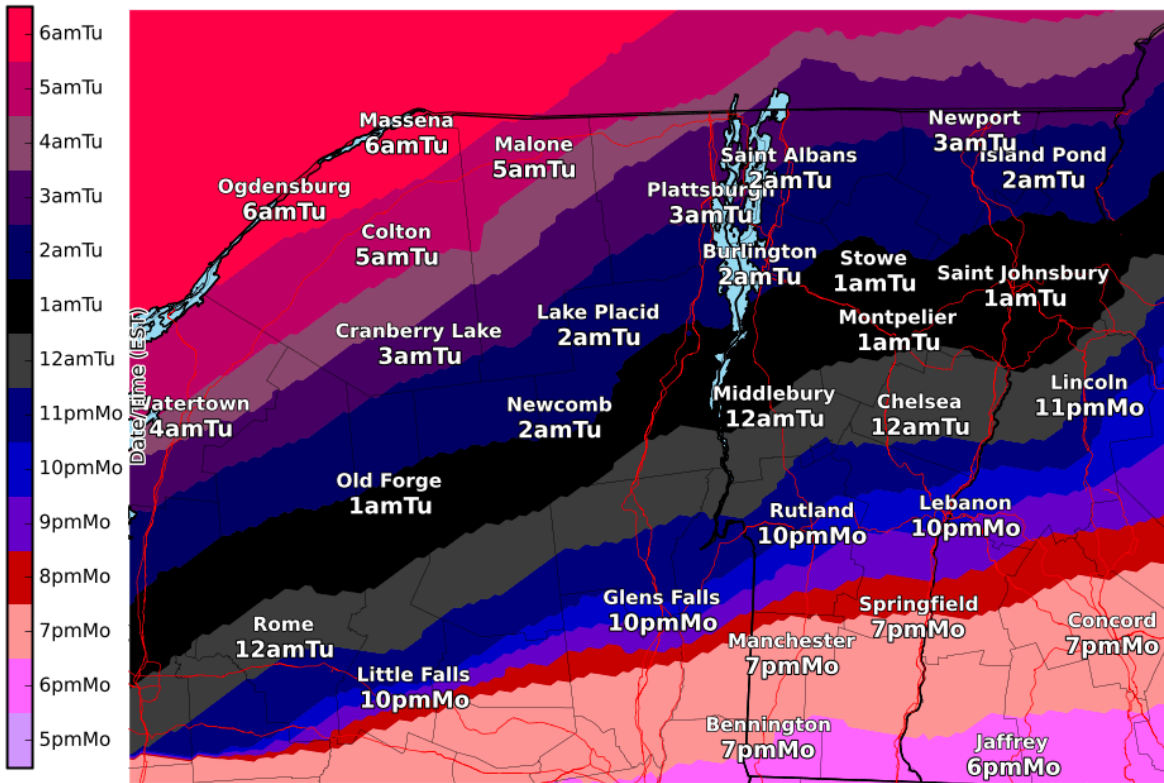
- ✓ A Winter Storm Warning is now in effect for eastern Clinton County in New York.



Precipitation Onset (Starting) Time

Snow Onset Time

Valid: Monday February 01, 2021 to Tuesday February 02, 2021



- ✓ The heaviest snow will fall over central and southern areas tonight through the Tuesday morning commute, then taper off in intensity as the day wears on.
- ✓ For central and northern areas, snow will be heaviest during the pre-dawn hours and continuing through Tuesday morning before tapering to light snow Tuesday afternoon.



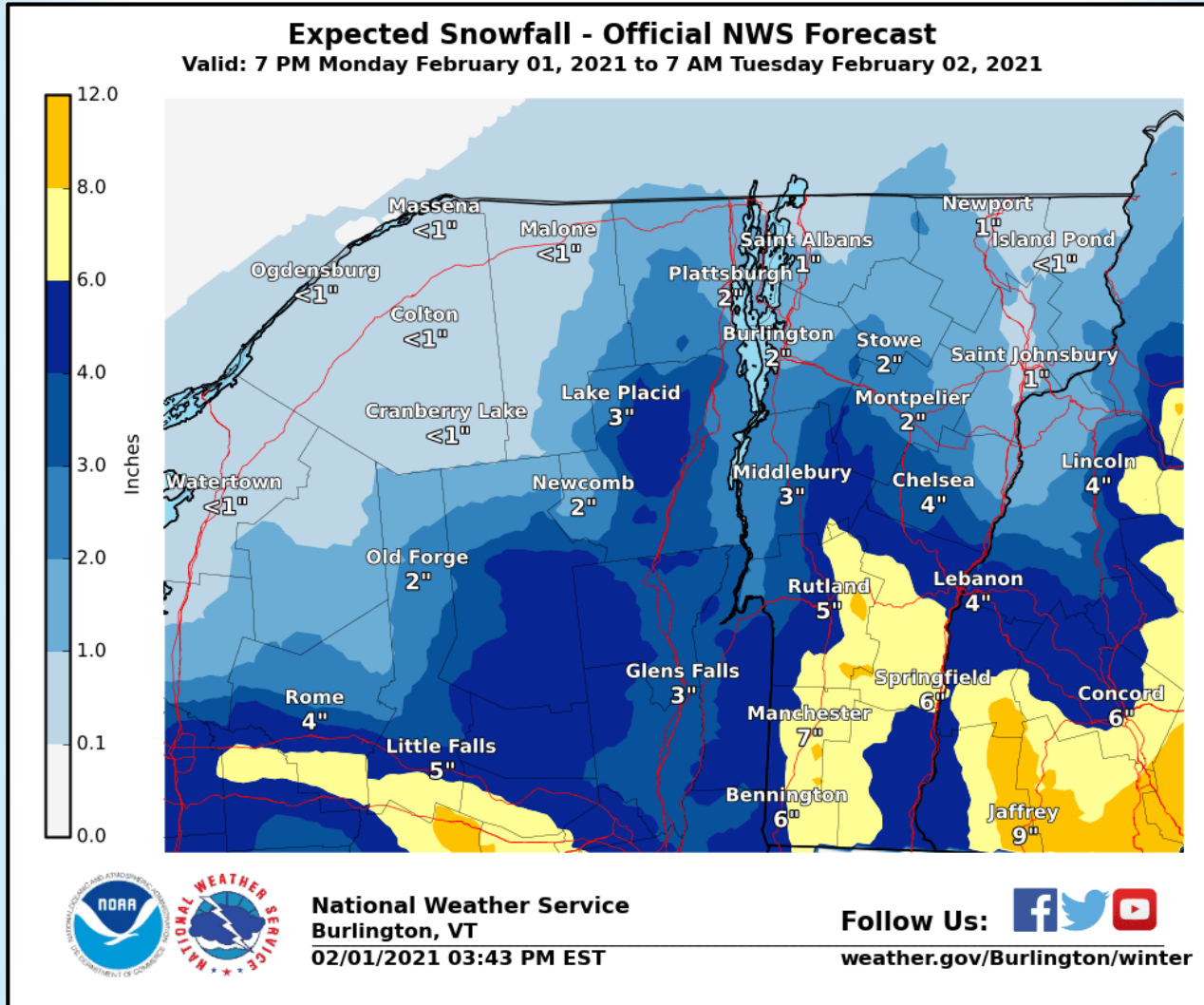
National Weather Service
Burlington, VT
02/01/2021 03:26 PM EST

Follow Us:
weather.gov/Burlington



Expected Snowfall

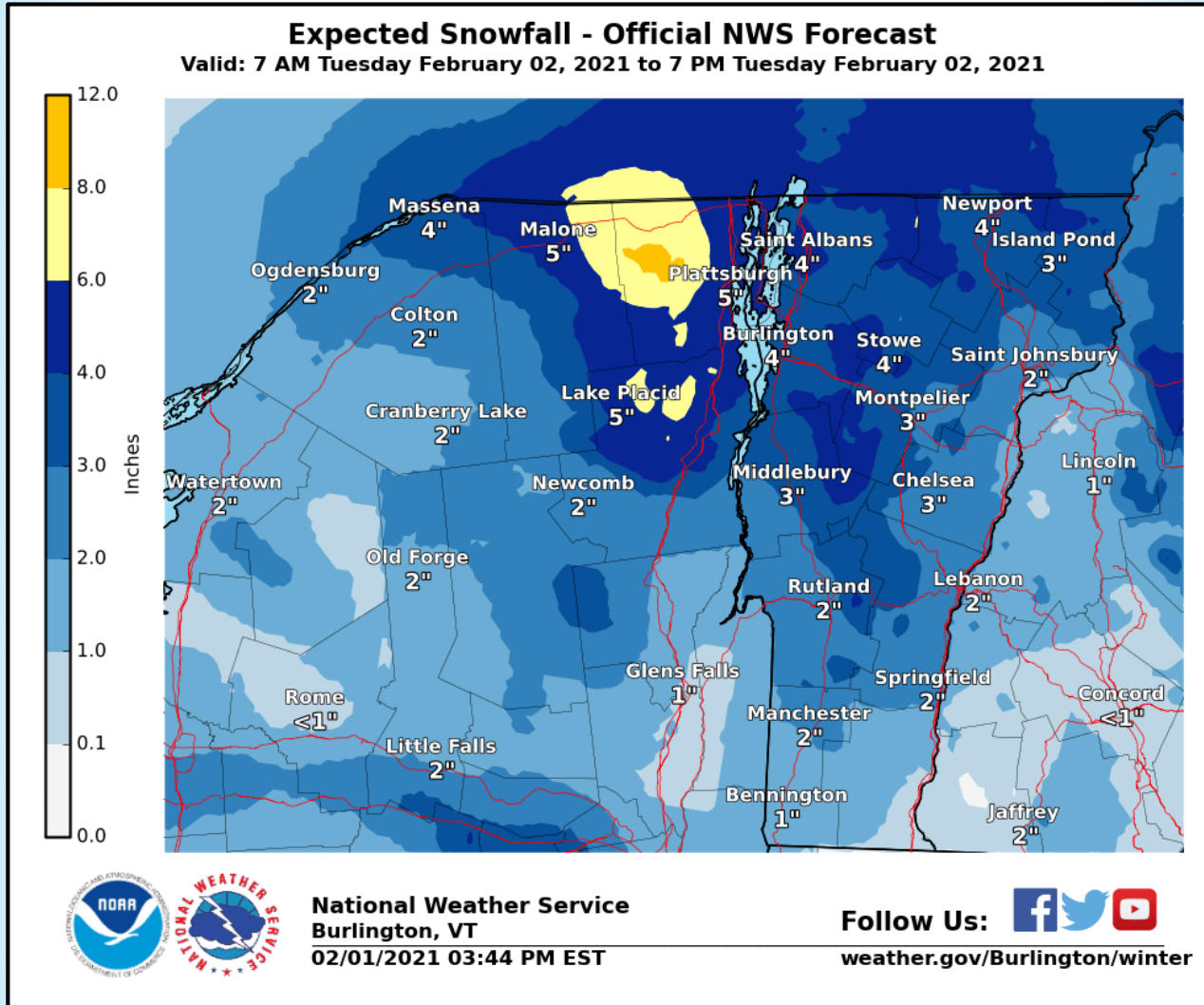
7 PM Monday through 7 AM Tuesday



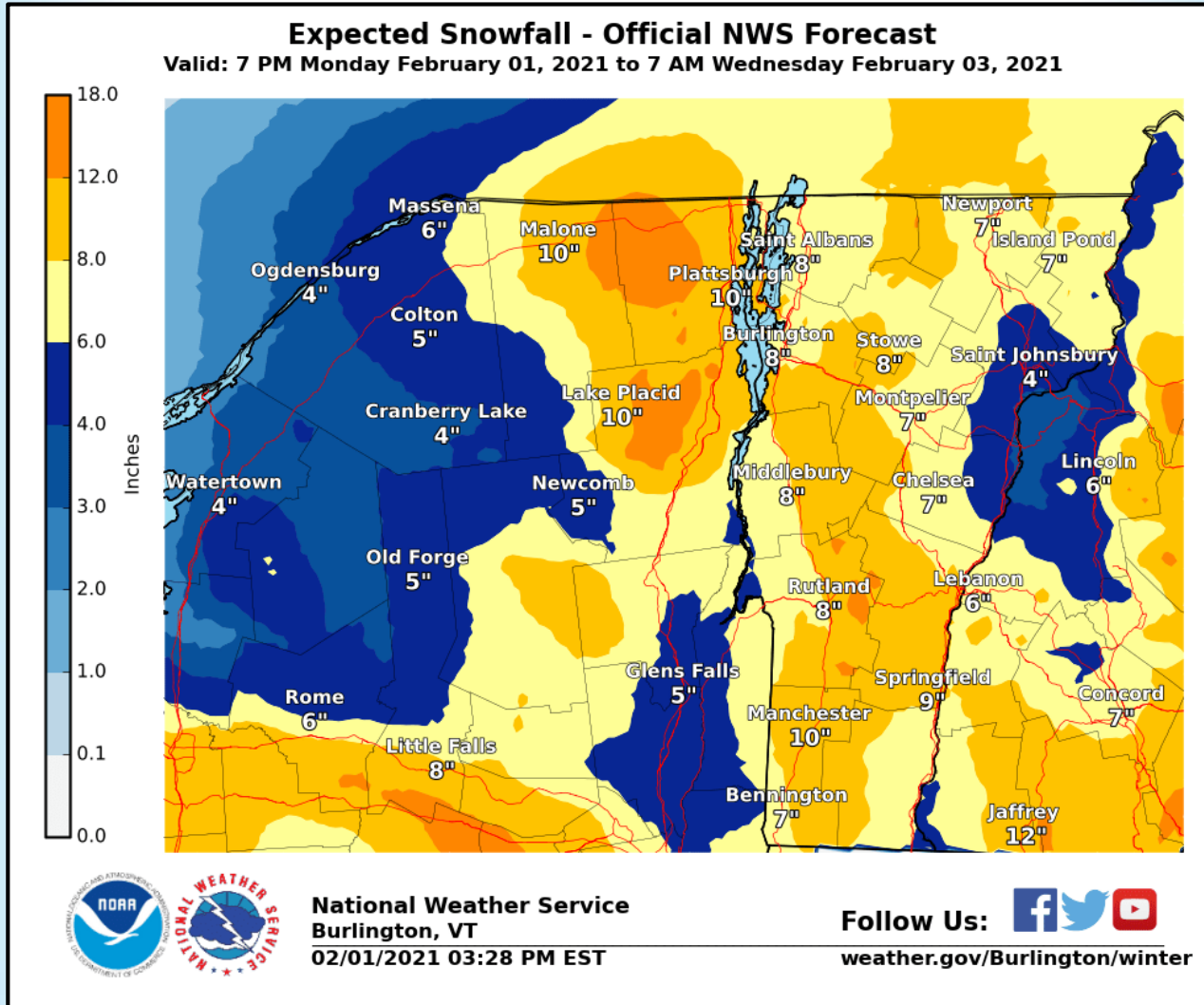


Expected Snowfall

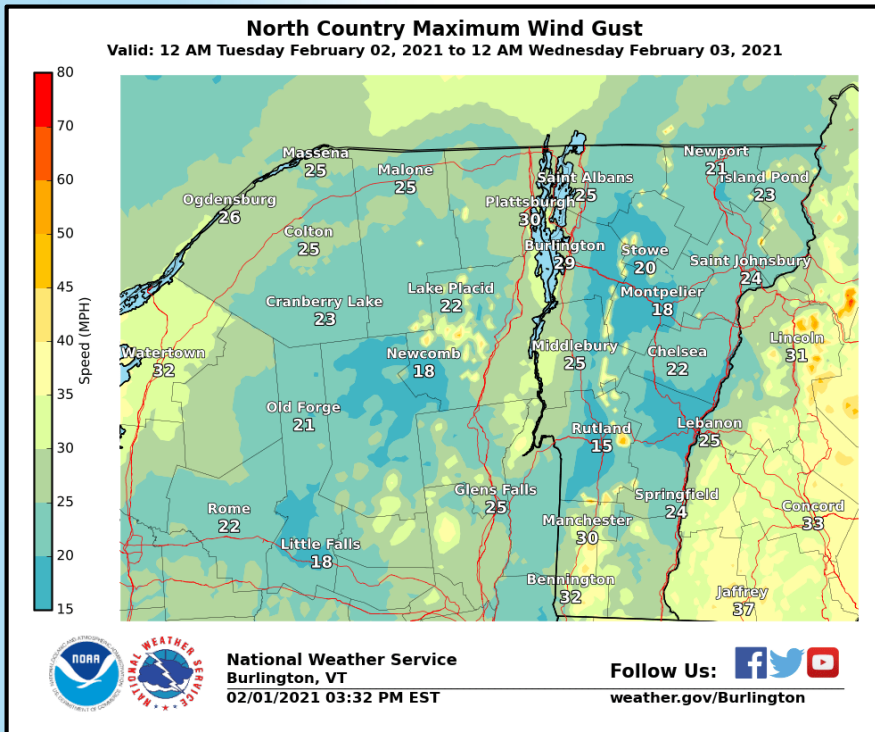
7 AM Tuesday through 7 PM Tuesday



Expected Storm Total Snowfall Tonight Through Wednesday Afternoon



Peak Wind Gusts

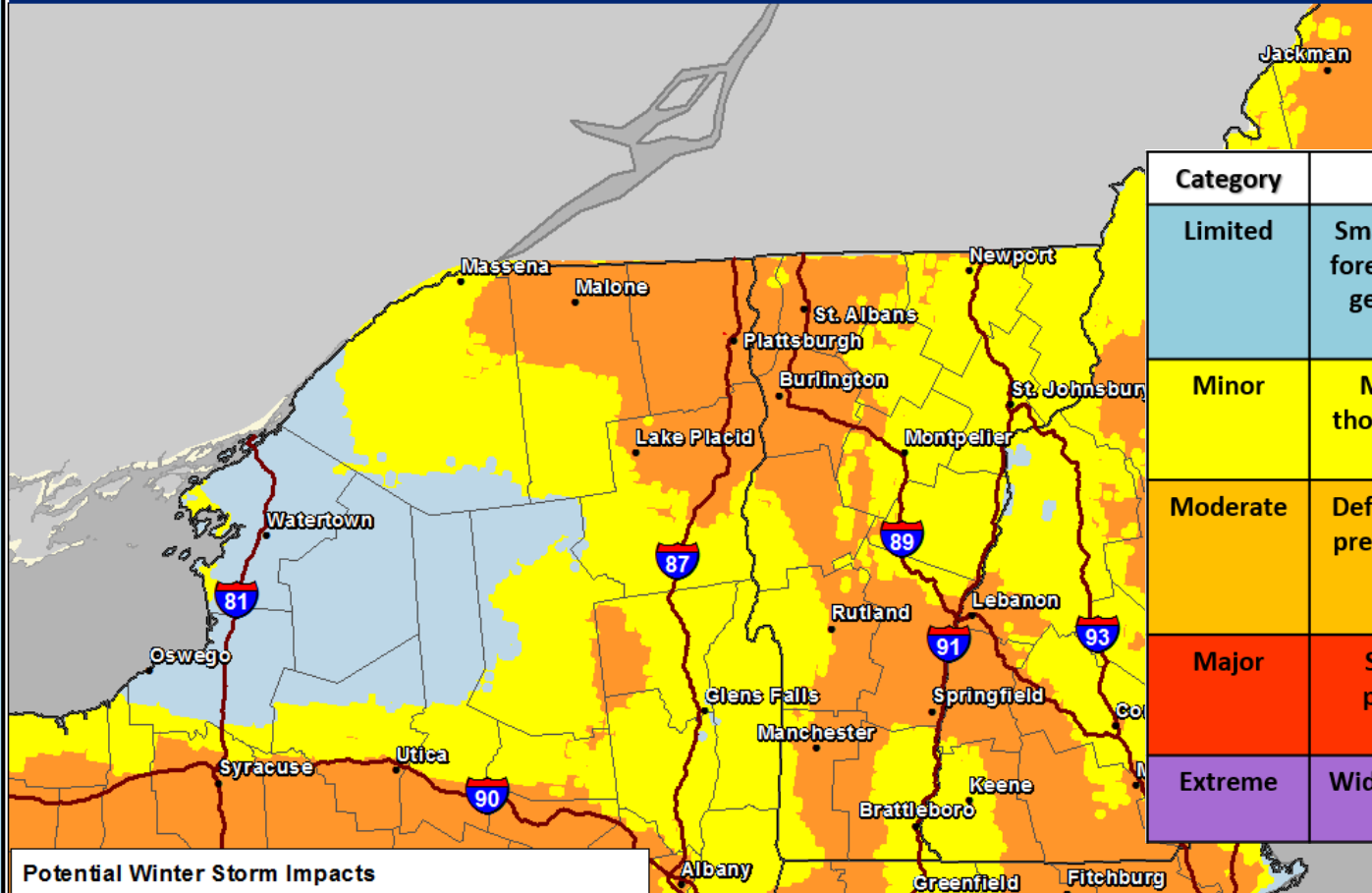


- ✓ Wind gusts of 25-35 mph in the valleys and 35-45 mph in the higher terrain is expected Tuesday.
- ✓ The strongest gusts will be seen across southern Vermont overnight, and northward during the day Tuesday.

Wind Speeds	Potential Impacts
< 35 mph	Little impact
35-45 mph	Possible blowing of unsecured objects, Small tree limbs down, Isolated power outages possible.
45-55 mph	Several small and larger limbs and small shallow rooted trees knocked down. Scattered power outages possible.
55-65 mph	Numerous branches, several small trees and a few large trees knocked down. Scattered shingle and minor structural damage. Scattered to numerous power outages likely.
> 65 mph	Numerous trees knocked down or uprooted. Utility lines down. Scattered structural damage due to wind and fallen trees. Numerous to widespread power outages.

Winter Storm Severity Index

WSSI Overall Component - Valid Through Wed, Feb 03, 2021 07 PM ET



Category	General Description
Limited	Small accumulations of snow or ice forecast. Minimal impacts, if any. In general, society goes about their normal routine
Minor	Minor disruptions, primarily to those with no preparation. None to minimal recovery time.
Moderate	Definite impacts to those with little preparation. Perhaps up to a day of recovery time for snow/ice accumulation events
Major	Significant impacts, even with preparation. Typically a day or more recovery time.
Extreme	Widespread severe impacts. Several days or more recovery.

Potential Winter Storm Impacts

No Impacts	Minor Impacts	Major Impacts
Limited Impacts	Moderate Impacts	Extreme Impacts

Created by:
The National Weather Service
Weather Prediction Center
Monday, February 1, 2021
2 PM ET

<http://www.wpc.ncep.noaa.gov/wwd/wssi/wssi.php?id=BTV>

Storm Summary and Expected Impacts

- ✓ Moderate to locally heavy snow will develop across southern Vermont this evening and spread northward to the Canadian border by sunrise.
- ✓ Snow covered roads and slippery conditions can be expected during the morning commute across southern areas, and the evening commute in the north.
- ✓ Snow will taper off during the morning across southern Vermont, and not until Tuesday night across northern areas.
- ✓ Additional light snow is expected Wednesday, especially across the higher terrain.

Contact and Next Briefing Information



Next Briefing By:
4 AM on February 2, 2021
Method: e-mail



Valid For Northern NY and ALL of VT

The latest and most up to date information can always be found at

www.weather.gov/btv



Web:
<http://www.weather.gov/btv/>



Phone (UNLISTED):
(802) 863-4279 or (802) 658-0150



E-mail:
nwsbtv.info@noaa.gov



Facebook:
<https://www.facebook.com/NWSBurlington>



Twitter:
<https://twitter.com/NWSBurlington>



YouTube:
<https://www.youtube.com/NWSBurlington>

Disclaimer: The information contained within this briefing is time-sensitive, do not use after 4 AM on February 2, 2021