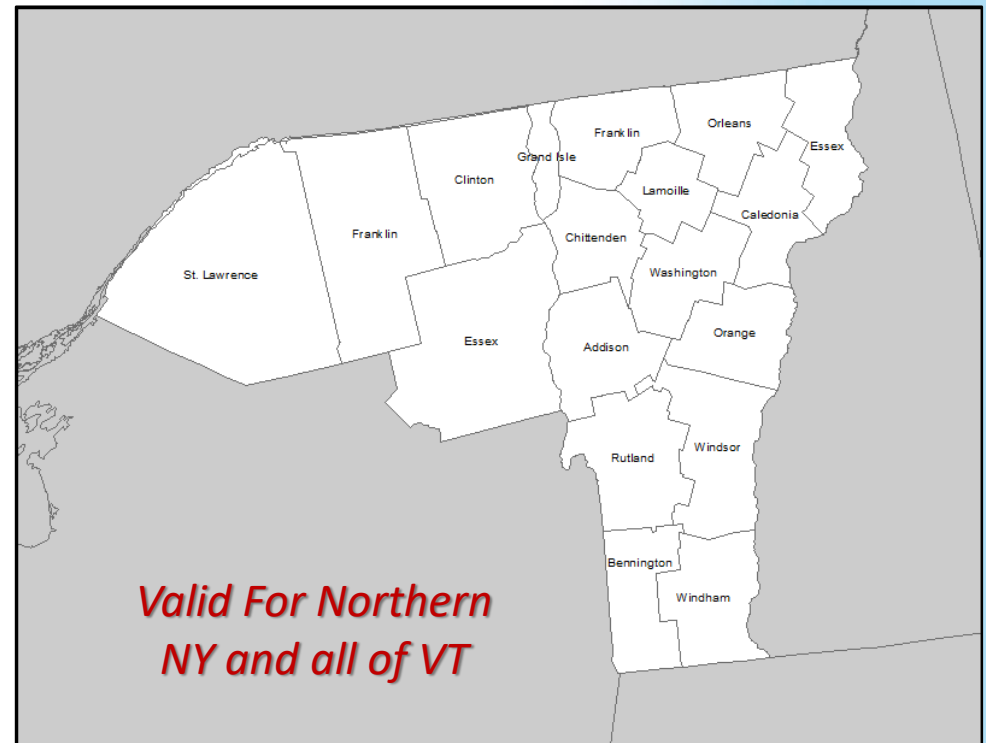


Snow Ongoing Across Portions of the Region

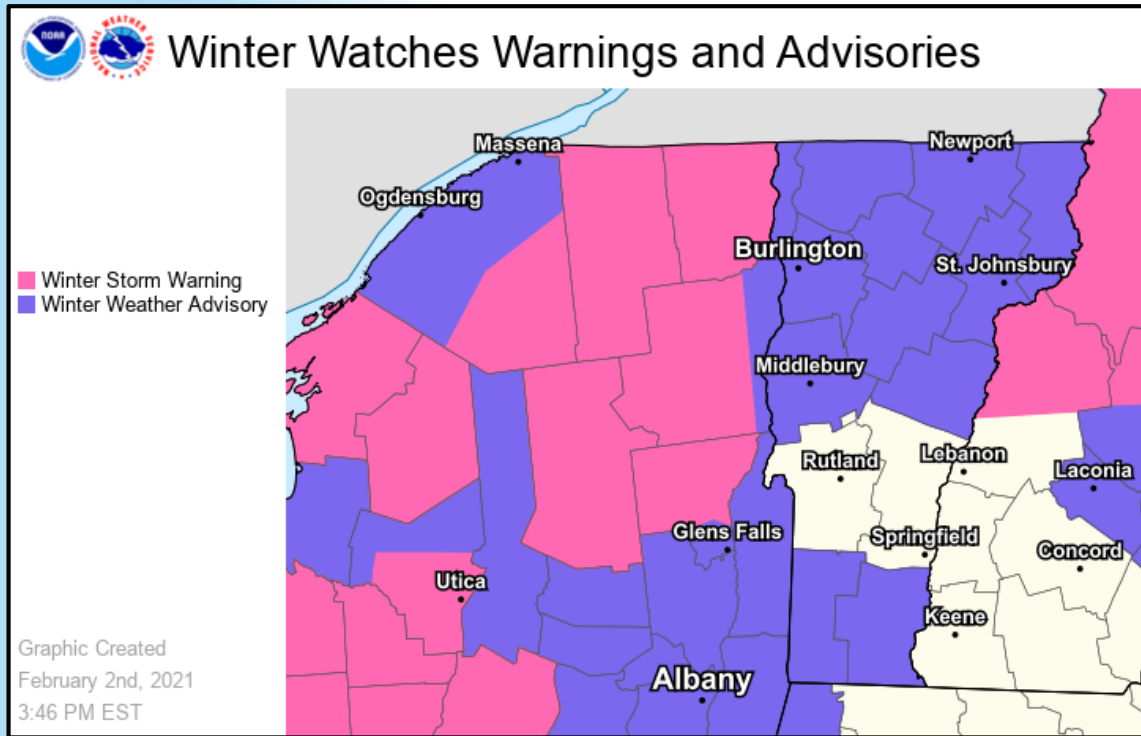
Decision Support Briefing # 7

Key messages and what has changed:

- ✓ A Winter Storm Warning is now in effect for
 - ✓ Franklin County of New York
 - ✓ Southeastern St. Lawrence County
- ✓ A Winter Wx Advisory in effect for southwestern St. Lawrence County
- ✓ Winter Storm Warning Cancelled for southern Vermont
 - ✓ Portions converted to advisory
- ✓ Snow continues across northern portions the North Country through Wednesday



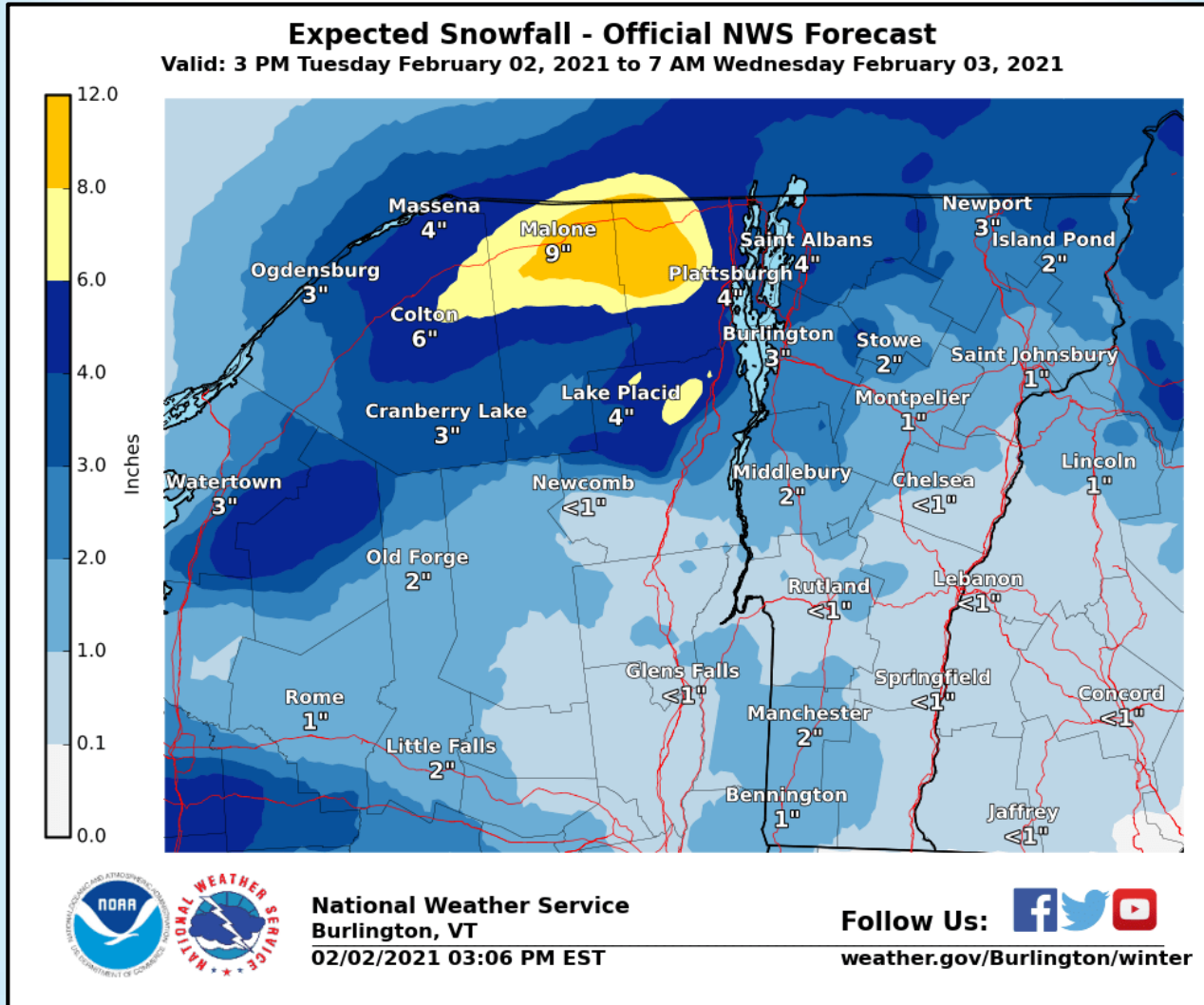
Winter Weather Warnings & Advisories



- **Winter Storm Warning** until 4PM Wednesday
 - Franklin, Clinton, western Essex and southeastern St. Lawrence Counties in New York.
- **Winter Weather Advisory** until 7 AM Wednesday
 - Most of Vermont
 - In New York the counties of
 - eastern Essex, northern and southwestern St. Lawrence



Additional Snowfall Expected through 7 AM Wednesday

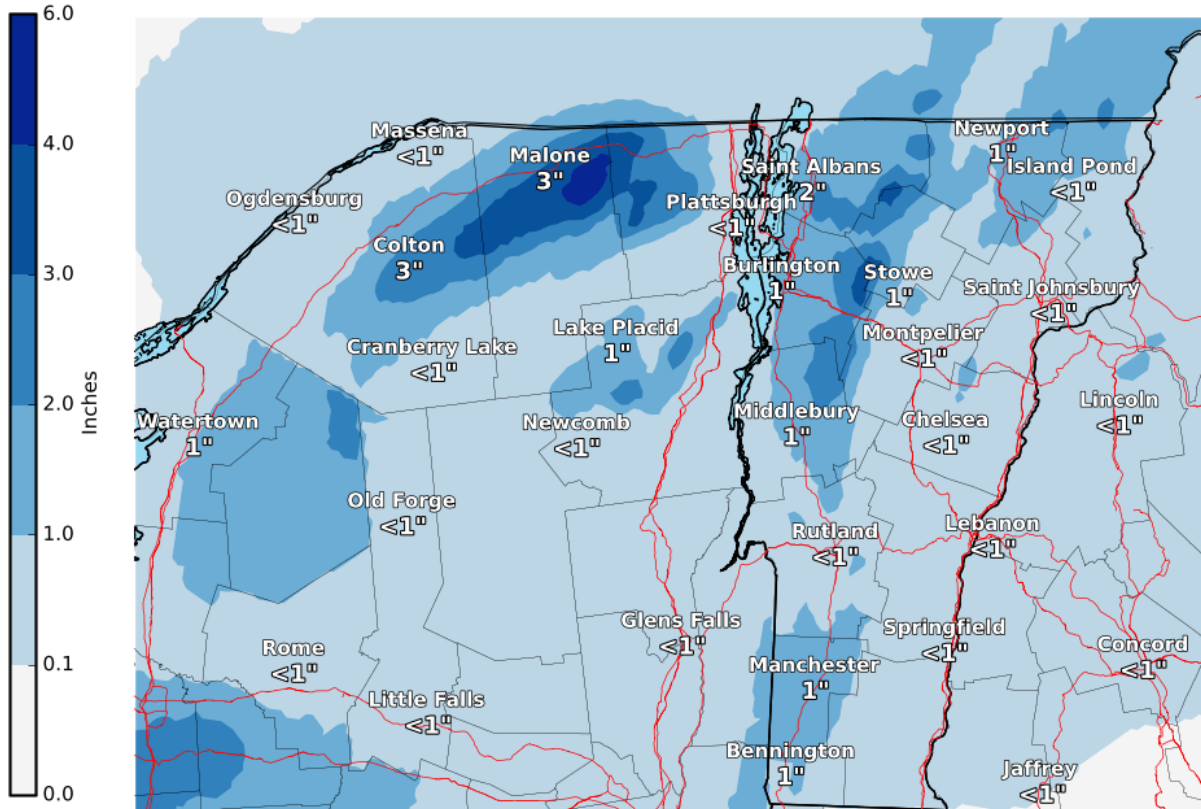




Additional Snowfall Expected 7 AM to 7 PM Wednesday

Expected Snowfall - Official NWS Forecast

Valid: 7 AM Wednesday February 03, 2021 to 7 PM Wednesday February 03, 2021

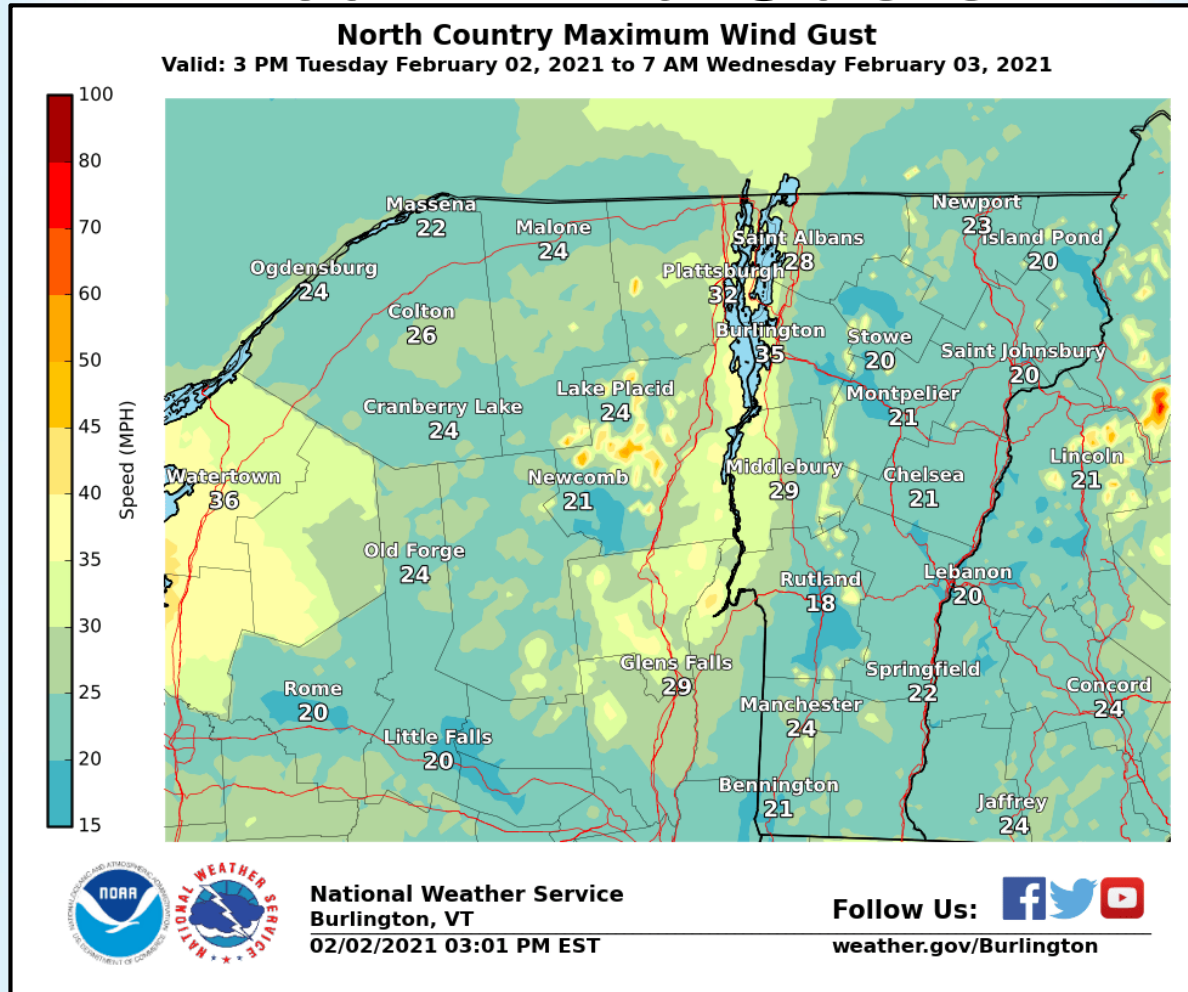


National Weather Service
Burlington, VT
02/02/2021 03:04 PM EST

Follow Us:
[weather.gov/Burlington/winter](https://www.weather.gov/Burlington/winter)



Peak Wind Gusts



✓ Wind gusts of 25-35 mph will continue across portions of the area tonight into Wednesday causing areas of blowing and drifting snow as well as reduced visibility

Storm Summary and Expected Impacts

- ✓ Moderate to locally heavy snow will continue across portions of northern New York, with lighter snowfall across Vermont.
- ✓ Snow covered roads and slippery conditions can be expected during the evening and morning commutes.
- ✓ Snow will taper off during the early Wednesday morning across Vermont, and not until Wednesday afternoon across northern New York.

Contact and Next Briefing Information



**Next Briefing By:
If conditions warrant**



Valid For Northern NY and ALL of VT

The latest and most up to date information can always be found at
www.weather.gov/btv



Web:
<http://www.weather.gov/btv/>



Phone (UNLISTED):
(802) 863-4279 or (802) 658-0150



E-mail:
nwsbtv.info@noaa.gov



Facebook:
<https://www.facebook.com/NWSBurlington>



Twitter:
<https://twitter.com/NWSBurlington>



YouTube:
<https://www.youtube.com/NWSBurlington>

Disclaimer: The information contained within this briefing is time-sensitive, do not use after on